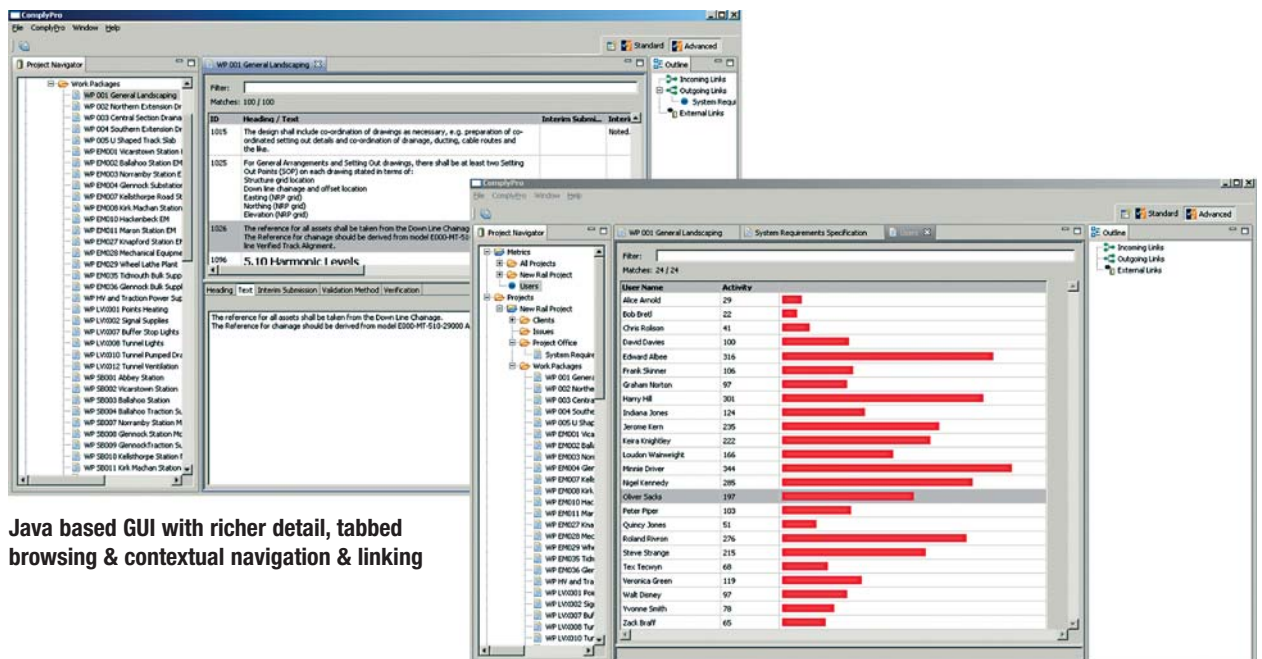


ComplyPro 2

ComplyPro 2 is Comply Serve's assurance solution for the transport, civil engineering and construction markets. This solution ensures that projects are compliant with project specifications throughout the supply chain. This is particularly relevant to high value, highly complex infrastructure projects that involve multiple stakeholders and the management of part or all of the supply chain. A typical example of the application of ComplyPro is for major infrastructure projects including new build rail infrastructure programmes, such as Transport for London's multi-million pound East London Line Project.



Java based GUI with richer detail, tabbed browsing & contextual navigation & linking

Dashboards for summary reporting on key project assurance & usage metrics

Key new features in ComplyPro 2

- ✓ ComplyPro 2 has been developed on the Java platform to ensure scalable, secure and performant web access.
- ✓ New project collaboration features ensure that geographically dispersed teams can see the latest up-to-date state of the project requirements. As soon as changes are released they can be seen immediately by everyone who has access to the internet - globally.
- ✓ Project teams can now update compliance statements using a simple familiar spreadsheet style user interface - and those updates are immediately viewable by the project office.
- ✓ Further enhancements to the user interface, ensures that ComplyPro 2 is even more intuitive and easy to use - allowing users do what they need to do without overloading them with features that they will never use.
- ✓ ComplyPro 2 has improved change management functionality for the management of change flowing both to and from the supply chain.
- ✓ Requirements can be linked directly to engineering drawings and other design documents stored in a document management system with full traceability
- ✓ A project portfolio dashboard shows metrics for all projects being run by an organisation so that the project office can monitor progress easily and effectively.

...solving the compliance maze...

ComplyPro in Action

The £363 million pound East London Line Project is phase one of a wider programme of work to improve London's rail infrastructure, transport and rolling stock. The East London Line is one of the cornerstones of TfL's £10bn Investment Programme and will deliver a railway line between West Croydon, Crystal Palace and Dalston Junction, incorporating the existing East London Line. When the railway is completed it will join up with the existing North London Railway via a link at Dalston Junction, and become part of TfL's new London Overground network. This will be the first significant move towards an orbital rail network for London, as it connects 20 London boroughs and brings huge regeneration opportunities to some of the most deprived areas of the Capital.

SaaS Deployment

Because ComplyPro is deployed throughout the supply chain using a Software as a Service (SaaS) delivery model via the Internet, this helps overcome the introduction of more formal processes, necessary for the demonstration of compliance, by providing process driven solutions that guide the casual user through unfamiliar territory. Subscription based pricing reduces the initial and ongoing investment needed to establish enterprise compliance processes which means wider access and faster deployment.

Key benefits

- ✓ Easy to access, web-based managed project compliance solution
- ✓ A single central project database, accessible globally
- ✓ High level of project compliance visibility throughout the supply chain
- ✓ Contextual role-based view of compliance information
- ✓ Significantly lower cost to demonstrate and audit project compliance
- ✓ Minimal IT footprint with greatly reduced infrastructure, administration and costs
- ✓ Intuitive and process-driven user interface
- ✓ Comprehensive analyses including: what-if, impact, coverage and risk analysis
- ✓ Fast enterprise implementation throughout the supply chain
- ✓ Managed linking to external artefacts, drawings, legislation and standards etc.

